

# PATHWAYS

A NEWSLETTER OF THE MIDTOWN GREENWAY COALITION

Volume 16, Issue 2 ♥ April, May, June 2011



WEST CALHOUN  
CEDAR ISLES DEAN  
EAST ISLES  
EAST CALHOUN  
CARAG  
LOWRY HILL EAST

PROSPECT PARK  
LONGFELLOW  
SEWARD  
EAST PHILLIPS

## GREENWAY COALITION PLANS FOR THE FUTURE

By Michael Nelson, Board President

For the past few months, the Midtown Greenway Coalition has been completing our strategic planning to chart out where the group would like to go in the next few years. Our primary focus will be the development of a plan for the corridor.

We realized we are best suited to study how transit will fit into the Midtown Greenway, while maintaining the natural environment, the green of the Greenway, and keeping the trails fully intact and open from the lakes to the river. We will be reaching out to our Greenway neighborhoods so that when rail transit finally comes to the corridor, we will all be able to speak with a clear voice. We envision a web-based 3D model which will help all communities better understand what an even greater Greenway could be.

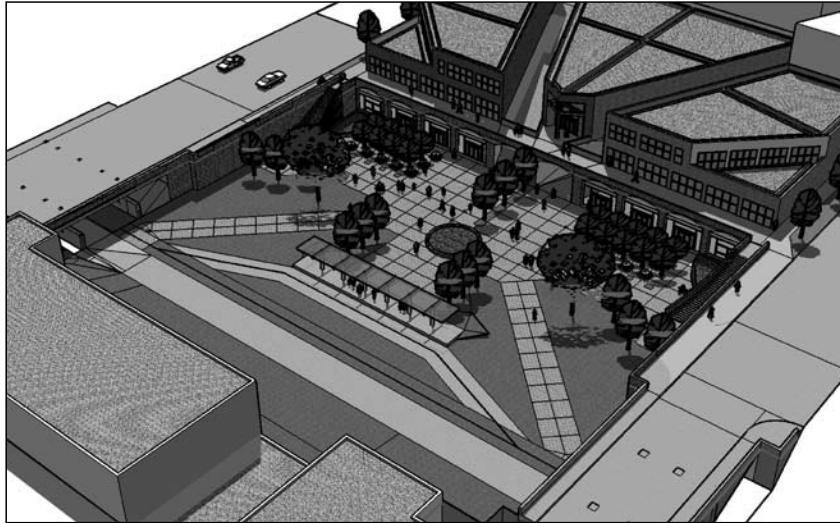
While we develop the plan, we will be engaging communities to advocate for and implement parts of the new plan such as access ramps at Pillsbury and Bloomington Avenues, and the creation of green fingers which would connect neighborhood parks to the Greenway. Everyone is welcome to help us continue to plan for an even greater Greenway.

As we move in this new and expanding direction, we will be hiring a new Executive Director in the next couple months. Make plans to attend our annual meeting on May 26 at 6:00 p.m. at Balance Fitness Studios (2902 Garfield Avenue) when everyone can thank Tim Springer for his 18 years of excellent work and welcome the new director. Thank you to everyone who is helping create a great Greenway!

## LA COALICIÓN GREENWAY HACE PLANES PARA EL FUTURO

Por Michael Nelson, Presidente de la Junta

En los últimos meses, la Coalición Midtown Greenway ha estado completando nuestro plan estratégico para marcar el rumbo hacia donde le gustaría dirigirse el grupo en los próximos años. Nuestro enfoque principal será el desarrollo de un Plan para el corredor urbano.



This image by Michael Nelson shows how future train stations down in the Greenway could be public destinations that welcome people passing to and from nearby business nodes and neighborhoods above.

Esta ilustración de Michael Nelson muestra como las futuras estaciones de trenes en el corredor Greenway podrían ser lugares públicos agradables para la gente que va y viene de los negocios en las cercanías y de los vecindarios.

Estamos convencidos que somos los más aptos para estudiar como circulará el tráfico en Midtown Greenway, preservando el entorno natural, las zonas verdes del Greenway, y mantener los senderos intactos y abiertos desde los lagos hasta el río. Trataremos de informar a los vecindarios que rodean el corredor Greenway, de forma que cuando el tren llegue al corredor, hablemos con una voz clara y firme. Tenemos pensado crear un modelo en 3D basado

en un sitio Web que ayudará a las comunidades a entender mejor el potencial de lo que podría ser el Greenway.

Mientras desarrollamos el plan, trataremos que las comunidades cercanas al Greenway apoyen y pongan en práctica partes del nuevo plan como por ejemplo: las rampas

*(continuado en la página 4)*

Translation by Acentos, Inc.

PHILLIPS WEST MIDTOWN PHILLIPS POWDERHORN CORCORAN

EDISNI >

Tim Springer Reflects on 18 Years with the Coalition

What's Happening at the Freewheel Midtown Bike Center

Upcoming Events!

The Coalition Would Like To Thank ...

WWW.MIDTOWNGREENWAY.ORG

WHITTIER LYNDALÉ CANDO

# UPCOMING EVENTS, MARK YOUR CALENDARS!

Spring is on its way, and with it comes some great opportunities to help out your Midtown Greenway and have a good time!



## CELEBRATE ARBOR DAY

Saturday, May 7 from 9 a.m. to noon

The Midtown Community Works 11th Annual Arbor Day Event will bring volunteers together to celebrate by planting trees and shrubs under the Sabo Bridge over Hiawatha, completing a multi-year planting effort in this area. Snacks, coffee, water and shovels will be provided. Don't forget your gloves!

Please ride your bike if you can! Automobile parking will be available at Allweather Roof at 2101 East 26th Street.

For more information or to volunteer, please contact Theresa Nelson, 612-879-0103, Theresa@midtowngreenway.org.

## THANKS TO OUR 2011 ARBOR DAY FUNDERS AND CONTRIBUTORS:

Hennepin County Regional Rail Authority, Hennepin County, MnDOT, Abbott Northwestern Hospital, Phillips Eye Institute, Allina Hospitals and Clinics, Target Corporation, Wells Fargo, Tree Trust, City of Minneapolis, Allweather Roof and Peace Coffee.

**TRAIL WATCH** cruised steadily through the winter with after-dark patrols of the Greenway and the Hiawatha LRT Trail. **The summer ride hours begin April 1st.** These are fun rides with great people. Email trailwatch@midtowngreenway.org for more information.

### THANK YOU TO OUR TRAIL WATCH VOLUNTEERS (12/2010 - 3/2011)

#### VOLUNTEERED FOR 1-3 RIDES:

Andres Altamirano	Aimee Jefferson
Mark Evans	Laura Kling
Ted Fabel	Kathleen Sullivan
Lauren Fulner	Patrick Williamson
Laura Silver	Brendan Abrams
Satya Varghese Mac	Mark Ambroe
Mary Alivia Bryan	Benjamin Cherland
Paul Caspersen	Hokan
Gabriel Hoffman	Kathy Koch
Kathy Holm	

#### VOLUNTEERED FOR 4-7 RIDES:

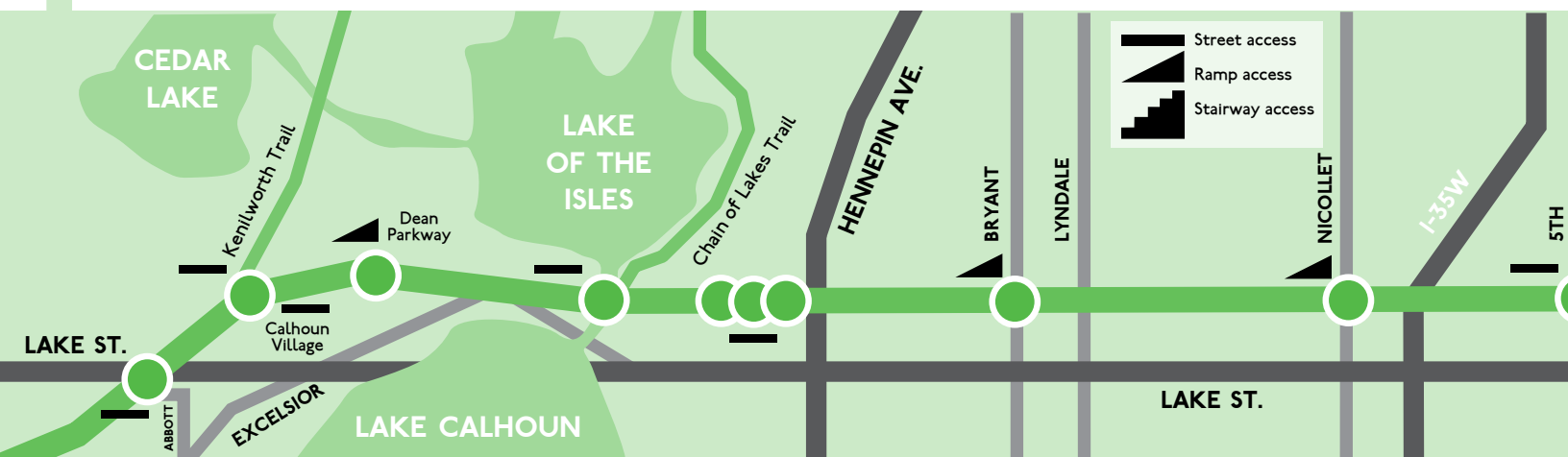
Ted Duepner	Scott Campbell
Benjamin Erickson	Amy Kusick
Becky Monnens	Jim Holm
Chad Wilkins	Rick Stafford

**TRAIL WATCH SPONSORS:** Bikes and Pieces, Bryant-Lake Bowl, Common Roots Café, Freewheel Bike, Gallactic Pizza, New Belgium Brewing, Old Chicago Pizza, Pizza Luce, Bedlam Theatre, Peacock Groove, Wells Fargo.

Add your logo by our map, call 612 879-0105



See more upcoming events on p.3





## TOUR DE FAT IS COMING BACK!

Loring Park on Saturday, July 23rd is gonna be hopping. We'll need volunteers to help set up, check IDs, sell beer tokens, serve New Belgium beer, and tear down. But most of all we need you to dress up in your best costume (something you can bike in), bring your gussied-up two-wheeler, and join the fun!

Tour de Fat is a whimsical summertime event put on by **New Belgium Brewing Co.** Complete with a bike-art-parade-kickoff, live entertainment and plenty of New Belgium beer, this traveling carnival honoring bicycle transportation donates all the proceeds to local bike related non-profits (Bicycle Alliance of Minnesota, Minnesota Off-Road Cyclists, and your very own Midtown Greenway Coalition). They'll also be giving away a fully loaded commuter bike to one person willing to give up their car, live car-free for one year and be the superstar of the day. Visit [www.newbelgium.com/events/tour-de-fat](http://www.newbelgium.com/events/tour-de-fat) to learn more.



## SIGN UP FOR THE GREENWAY CHALLENGE

Saturday, September 24 Start time 2:00 p.m.

**Everyone loves the Midtown Greenway!** In a few short years the Greenway has become the backbone of self-propelled transport in Minneapolis. You walk it, run it, blade it, bike it. Now, help support it!

The Greenway Challenge is a bike-a-thon designed for cyclists of all abilities. Raise a minimum of \$250 in pledges from friends, family, co-workers and neighbors. All funds raised go directly to keeping your Greenway safe and beautiful.

Fantastic prizes await the top individual and team fundraisers, including a biking weekend in scenic Lanesboro, Minnesota (including 2 nights at a B&B or vacation home, dinner and Commonweal Theater tickets).

You can ride individually or register as a team of 4. Teams will ride together as a group and get special recognition for their team logo/name on the Midtown Greenway Coalition's website. All riders, whether riding individually or on a team, will need to register in advance and raise at least \$250 in pledges to participate.

**REGISTER** by going to [midtowngreenway.org](http://midtowngreenway.org) or to volunteer, contact Theresa at [theresa@midtowngreenway.org](mailto:theresa@midtowngreenway.org). Early bird registration by August 15 is \$20/rider; \$25 after.



### JOIN OUR GROWING LIST OF EVENT SUPPORTERS:

#### Lead Sponsors

Quality Bicycle Products  
KFAI  
Seward Co-op

#### In-Kind Sponsors

Barbette

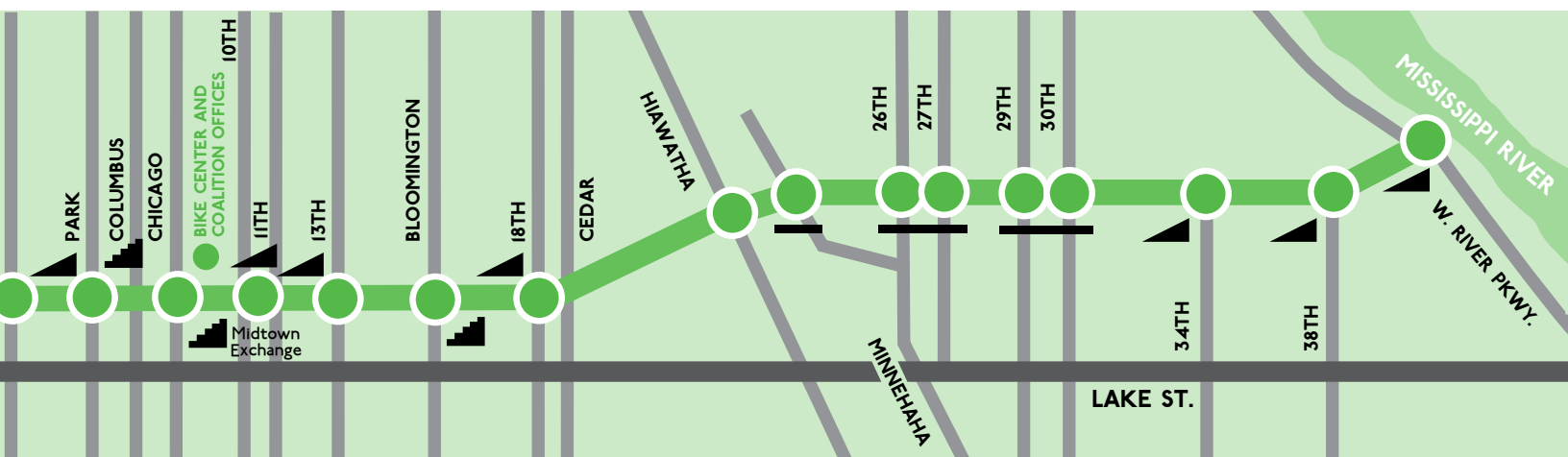
#### Team Sponsors

Allina Hospitals and Clinics  
Anodyne Coffee House  
Birchwood Cafe  
Depot Coffee House  
Freewheel Bike  
Nice Ride  
Nokomis Cycle  
Penn Cycle  
Sunrise Cyclery

## SHOP THE SEWARD CO-OP IN MAY AND "ROUND UP" FOR THE GREENWAY

During the month of May when you shop at the Seward Co-op, you'll be asked if you want to round up and contribute to the Midtown Greenway Coalition. For example, when paying \$23.00 for a \$22.50 purchase, the 50 cent difference will go to the Midtown Greenway Coalition. We are one of the first recipients of the co-op's new ongoing donation program, SEED. You can also specify an amount that cashiers will add to your purchase total. Thanks Seward Co-op, and thanks to all the Greenway lovers who will shop and round up.

**Seward Co-op**  
GROCERY & DELI



## LA COALICIÓN GREENWAY HACE PLANES PARA EL FUTURO

de acceso en las avenidas Pillsbury y Bloomington, y la creación de “rayos verdes” que conectarán a los parques de los vecindarios con el Greenway. Invitamos a todos a ayudarnos a continuar el plan para lograr un mejor Greenway.

A medida que nos orientamos en esta dirección nueva y expandi-

da, contrataremos a un nuevo Director Ejecutivo en los próximos dos meses. Hagan planes ya para asistir a la Reunión anual a realizarse el 26 de mayo a las 6:00 de la tarde en Balance Fitness Studios (2902 Garfield Avenue) en la cual podremos agradecer a Tim Springer por su 18 años de excelente trabajo, y dar la bienvenida al nuevo director. ¡Gracias a todos los que están ayudando a crear un excelente Greenway!

## MISSION

We empower communities to develop, improve, protect, and enjoy the Midtown Greenway as a green urban pathway to improve people's lives.

## MISIÓN

Nosotros habilitamos a las comunidades a desarrollar, mejorar, proteger y disfrutar del sendero urbano Midtown Greenway para mejorar la vida de la gente.

## THANK YOU TO OUR DONORS AND VOLUNTEERS! (Please call if we have missed you!)

### GRANTS AND CONTRACTS

(Begun or continuing 12/2/10 - 3/15/11)  
McKnight Foundation  
The Minneapolis Foundation  
Surdna Foundation  
Wells Fargo Foundation

### BUSINESS & ORGANIZATION MEMBERS/DONORS

(12/1/10 - 3/15/11)  
Advance Consulting, LLC.  
Bituminous Roadways, Inc.  
Bromelkamp Company LLC  
Freewheel Bike  
Lomardo Group  
MOCA/MORC, QBP  
New Belgium Brewing  
North Star Mini Storage  
Process Type Foundry  
Quality Bicycle Products  
Redesign, Inc.  
Smith Foundry  
SRF Consulting Group Inc.  
The Cornerstone Group  
Transit for Livable Communities  
Uptown Aurora Properties

### INDIVIDUAL MEMBERS/DONORS

(12/1/10 - 3/17/11)  
Darren Acheson  
Charlie Adair  
Dick Adair  
Dwight Anderson  
Steve Anthony  
Scott Anton  
Mary Arneson and Dale Hammerschmidt  
Edward Axt  
Tara Beard  
Ann Bernstein

Bob Beverage  
Michael & Susan Blehert  
Amy Brugh  
Derek Burrows Reise  
Jamie Buss  
Otto Byhre  
Dave Carlson  
Nina Clark  
Burt Coffin  
Kim Couch  
Alicia Cozine  
Joe & Jean Crocker  
Paula De Cosse  
Priscilla Cushman  
John DeWitt  
Genie & Joe Dixon  
Sheri Doughman  
Chuck Eddleston  
Ann & John Elward  
Peter & Karen Erickson  
Alena Finsky  
Peter Fleck  
Gerald Flom  
Gail Freedman  
Michael Fuhrman  
Lisa & Colin Gardner-Springer  
Richard Garon  
Nancy Gaschott  
Cathy Gasiorowicz  
Hans Gasterland  
Karma & Brian Geiger  
Hughes

Edith L. Johnson  
Eric Johnson  
Phyllis Kahn  
Matt Karl  
Robert Kasak  
Robert Kean  
Shirley Keating  
Scott Kindrick  
Jan Kleinman  
Henry Kohring  
Lindsey Kopp  
Thomas Kottke  
George & Sonja Kung  
Tom Lais  
Craig Lassig  
Cynthia Launer  
Lawrence Levine  
Lisa Legge  
Scott Likely  
Ellen Lipschultz  
Ken Logsdon  
Mary Elise  
Lowe & Jane Austin  
Randi Lyders  
Mari Lyman Lowe  
Chrissie Mahaffy  
Kent & Nanette Malcomson  
Karen Margolis  
Howard & Lynne Markus  
George Mathews  
Stephen McHenry  
Leslie Modrack  
Emily Moore  
Mary Moore  
Eric Mueller  
Robert & Ellen Nelson  
Steven & Dawn Nelson  
Nancy Newman  
William Nynas  
Patrick O'Connor  
David Ondich  
Ann & Thomas O'Toole  
Joan Pasiak  
Robbie Perl

Carol Peterson  
Laurie Pohlman  
Emmett Pokorny  
Pat & Greg Pratt  
George Puzak  
Nic Puzak  
Mark & Karen Rabinovitch  
Jennifer Randolph Reise  
Martin & Dorothy Richmond  
Mark Ritchie  
Evan Roberts  
Elliott Royce  
Roger Rusack  
Todd Sample  
Richard Sandeen  
Richard & Jean Sanford  
Fadil Santosa  
Paul Satre  
Gary Schiff  
Chris & Carol Schoonover  
Donation made in memory of Caroline Schultz  
Carolyn Shrewsbury  
Markus & Tricia Silpala  
Robert Simonds  
Dale & Judith Simonson  
Betsy Sohn  
Sarah Springer  
Ruby Steigerwald  
Mary Jane Steinhagen  
Harriet & Stephen Swartz  
Karl Stoerzinger  
Sonny Taylor  
Bethany Thomas  
Will Thomas  
Jane Thomson  
Becky Thorson  
Kyle Torfin  
Walter & Laura Treichel  
David & Lynn Vander Haar  
Bob Veitch  
Mary Weber  
Foster Willey Jr.  
David Woolley

Volunteers  
Mary Arneson  
Holly Buchanan  
John DeWitt  
Amanda Dlouhy  
Seth Doorn  
Hans Gasterland  
Luke Gliddon  
Dale Hammerschmidt  
Eric Hart  
Gabriel Hoffman  
Margaret Kirkpatrick  
Angelina Matias  
Margaret McGlynn  
Leslie Modrack  
Eric Mueller  
Jo Ann Musumeci  
Michael Nelson  
Paul Nelson  
Julie O'Baighill  
George Puzak  
Todd Sample  
Karl Stoerzinger  
Michael T'Kach  
Kelly Wilder  
Margaret Wunderlich

**VOLUNTEERS**  
biota - A Landscape Design and Build Firm  
Birchwood Café  
Bryant Lake Bowl  
CARAG  
Carbon Creative  
Childrens Hospital and Clinics  
Children's of Minnesota  
Dero Bike Rack  
First Unitarian Society  
Food 4 Thought  
Lake Country School  
Midwest Lock and Safe  
Miller Hanson Partners  
Mrs. Meyers Clean Day  
North Prairie Tileworks  
Northstar Rollergirls  
Old Arizona  
Peace Coffee  
Penn Cycle and Fitness  
Phillips Garden  
Rotary Clubs of Minneapolis and Uptown  
Salem and Lyndale Churches  
Seward Co-op Grocery & Deli  
Sheraton Midtown Hotel  
Smiley's Clinic  
Smith Foundry  
Spirit of the Lakes  
St Mary's University  
Surlly Brewing Company  
The Murals of LynLake  
The New Congregation  
The Wedge Coop  
Touchstone  
Transition Plus  
Trustone  
West Calhoun Neighborhood Council  
Whittier Alliance  
Whole Foods Market

**IN-KIND DONORS**  
Acentos, Inc  
Augsburg College  
Freewheel Bike  
Fulton Beer  
Harriet Brewing  
New Belgium Brewing  
(For additional in-kind donors specific to Trail Watch, see article on p. 5; and for The Greenway Challenge, see p. 3)

**ADOPT A GREENWAY**  
Albert's Organics  
Allina Commons  
Anderson Elementary

## MIDTOWN GREENWAY COALITION BOARD MEMBERS

The Coalition board of directors consists of one seat for each of the 17 neighborhoods along the Lake Street-Midtown Greenway Corridor, and four at-large seats. (Contact us to learn more about available seats.)

Holly Buchanan  
**CARAG**  
Glen Christianson  
**EAST CALHOUN**  
John DeWitt  
**PROSPECT PARK**  
Amanda Dlouhy  
**PHILLIPS WEST**  
Seth Doorn  
**WEST CALHOUN**

Eric Hart  
**LONGFELLOW**  
Gabriel Hoffman  
**SEWARD**  
Margaret Kirkpatrick  
**(SECRETARY) EAST PHILLIPS**  
Angelina Matias  
**AT LARGE**

Leslie Modrack  
**LOWRY HILL EAST**  
Jo Ann Musumeci  
**WHITTIER**  
Michael Nelson  
**(PRESIDENT) LYNDALE**  
George Puzak  
**AT LARGE**

Karl Stoerzinger  
**(OFFICER AT-LARGE) CORCORAN**  
Michael T'Kach  
**EAST ISLES**  
Kelly Wilder  
**MIDTOWN PHILLIPS**  
Margaret Wunderlich  
**(TREASURER) AT-LARGE**

We are currently seeking volunteer board members representing the following neighborhoods: Cedar Isles Dean and Central. We are also hopeful to increase the diversity of our board of directors when filling these positions.

For a list of board members' roles and responsibilities, visit [www.midtowngreenway.org](http://www.midtowngreenway.org). Click on "the Coalition," then "Board of Directors," or call **612-879-0103**

Tim Springer, Executive Director  
612-879-0105 • [tim@midtowngreenway.org](mailto:tim@midtowngreenway.org)

Theresa Nelson, Programs Manager  
612-879-0103 • [theresa@midtowngreenway.org](mailto:theresa@midtowngreenway.org)

Ben Cherland, Lutheran Vol. Corps Comm. Organizer  
612-879-0106 • [ben@midtowngreenway.org](mailto:ben@midtowngreenway.org)

2834 10TH AVENUE SOUTH, GREENWAY LEVEL, SUITE 2, MINNEAPOLIS, MN 55407 • [WWW.MIDTOWNGREENWAY.ORG](http://WWW.MIDTOWNGREENWAY.ORG) • FAX: 612-879-0104

# TIM SPRINGER REFLECTS ON 18 YEARS WITH THE COALITION

By Tim Springer, Executive Director through June 3, 2011



The Midtown Greenway rocks. I love to be on the Greenway when it's full of commuters, joggers, and joy-riders of all stripes. I feel very fortunate to have been on the team that made it happen. Thank you to the collective Midtown Greenway Coalition community for giving me that opportunity.

This job has been extremely rewarding, but also extremely demanding. I decided to move on so that I could slow my pace, smell more

roses, and try my hand at some new things. Many people have asked me what's next. Two possibilities that excite me are rehabbing old buildings and bicycle transportation consulting.

This change will be great for me as well as the Midtown Greenway Coalition. By me stepping aside, the Coalition can more easily empower a broader set of leaders with more ideas in ways that provide greater organizational depth and sustainability. This is timely as the Coalition launches a new board-defined initiative. Chapter One of the Coalition's history was about getting the trails built and well-used by all. Chapter Two will be about engaging communities to guide the way rail transit fits alongside the trails, the way Minneapolis grows up along the Greenway's edges, and the pursuit of vibrant outdoor spaces within and connecting to the Greenway. A successful Chapter Two is essential concerning the Greenway's long-term safety, functionality, and aesthetics.

Speaking of shared responsibility, to the thousands of people who have helped the Coalition over the years, thank you! The continuing success of the Midtown Greenway depends to a large extent on the continuing success of the Midtown Greenway Coalition, and this success depends on you maintaining your support and working relationships with the Coalition. Based on past behavior, I know you are all up for it. See you out on the Greenway.



## PARTICIPATE IN HISTORIC TRANSITION OF EXECUTIVE DIRECTORS AT ANNUAL MEETING

- Thursday, May 26th, 6:00 p.m. to 8:00 p.m.
- At Balance Fitness Studio, 2902 Garfield Ave. S.

Join us for this annual celebration that is open to the public. There will be board elections, delicious food, time to mingle, and a program to formally say farewell to Tim Springer and welcome our new executive director.

About our event sponsors:

**Fabulous Catering** will donate a very tasty buffet. Fabulous Catering specializes in offering the most beautiful and stunning food experience possible for its clients, with emphasis on custom menus; quality, professional service; and the freshest available ingredients.

**Balance Fitness Studio**, the donor of our meeting location, provides personal fitness training in a beautifully-designed facility by trainers with advanced degrees, diverse specialties, and established careers.

### WHAT'S HAPPENING at the Freewheel Midtown Bike Center



By Mario Macaruso

It has been a great 2011 here at Freewheel Midtown Bike Center. Trail traffic has been steadily increasing even with the big snowstorms this season. We would like to give a large thank you to the city of Minneapolis who has done a great job clearing the trail and making sure graffiti is taken care of even in sub-zero weather. The increasing angle of the sun, has fueled our excitement for the warm weather.

We have added new faces to our line-up at Midtown Bike Center. We are a dedicated and passionate staff. We have added Fresh Baked Cookies and a Gourmet Soup menu in the Café, stop by and try some delicious goodness, you should reward your self-propelled identity.



2834 10th Avenue South  
Greenway Level, Suite 2  
Minneapolis, MN 55407

RETURN SERVICE REQUESTED

Phone: 612-879-0103  
info@midtowngreenway.org  
www.midtowngreenway.org

# MARK YOUR CALENDARS

See events on pages 2-3.



Printed on 30% recycled material

Clip and post on fridge



## CALENDAR OF EVENTS

### ANNUAL MEETING

Thursday, May 26, 6:00 p.m. - 8:00 p.m. , see page 5

### BOARD OF DIRECTORS

Fourth Thursdays, April 28, and  
June 23, 6:00 p.m. - 8:00 p.m.

### EXECUTIVE COMMITTEE

Third Thursdays, April 21, May 19 and  
June 16, 6:00 p.m. - 7:30 p.m.

### GREENWAY IMPROVEMENTS COMMITTEE

Second Thursdays, April 14, May 12 and  
June 9, 6:00 p.m. - 8:00 p.m.

### GREENWAY CHALLENGE PLANNING MEETING

First Thursdays, April 7, May 5 and  
June 2, 5:30 p.m - 7:00 p.m.

### ARBOR DAY

Saturday, May 7, 9:00 a.m. to noon, see page 2

Unless indicated, all meetings are held at the Midtown Greenway Coalition's office (2834 10th Avenue South, Greenway Level, Suite 2, Minneapolis, MN 55407).



## MEMBERSHIP AND DONATION FORM

Name \_\_\_\_\_

Address \_\_\_\_\_

City, State, Zip \_\_\_\_\_

Phone, E-mail \_\_\_\_\_

- \$250 - Greenway Angel
- \$100 - Greenway Patron
- \$50 - Greenway Advocate
- \$25 - Greenway Sponsor
- Business \$ \_\_\_\_\_
- Any amount comfortable for you \$ \_\_\_\_\_
- Yes, I want to volunteer

My main interest is: \_\_\_\_\_

Please make your check payable to:  
"Midtown Greenway Coalition"  
and mail to: Midtown Greenway Coalition  
2834 10th Avenue South, Greenway Level, Suite 2  
Minneapolis, MN 55407  
or donate at [www.midtowngreenway.org](http://www.midtowngreenway.org)